



# THE



# FLATWHEEL

**APRIL 2019**

**VOLUME 54, NUMBER 4**



## In This Issue

APRIL 2019

VOLUME 54 NUMBER 4

### FEATURES

**14 BIENNIAL AUCTION  
WRAP UP**

**15 HOW DID THE  
NICKLE PLATE GET ICE?**

**17 DIGITRAX UP-5  
TRACK STATUS LED**

**19 DRIVING AROUND  
THE OLD CLEVELAND  
STOCKYARD AREA  
(WEST 65TH)**



### COLUMNS

- 3 North Coast Leadership
- 4 When and Where
- 5 An Editorial
- 6 From The Super
- 7 General Meeting Minutes
- 8 This & That
- 8 Sidebar
- 9 Module Group
- 10 Membership
- 10 Raffle
- 11 Company Store
- 12 Clinic
- 13 Contest Table
- A What's Going On?
- B Hobby Sources Listings

COVER PHOTO: Joe Kurilec, MMR provided this photo of CLEVELAND UNION TERMINAL X-99 MOW double ended wreck crane. Powered with batteries, it was designed to work in tunnels where diesel fumes are problematic. Also note the cab was fixed and only the booms swiveled. Model contest anyone? And NO, this is not an April Fool's joke!

# NORTH COAST LEADERSHIP

## ELECTED OFFICERS

Superintendent - Lee Sheffield lakeshorenyc@yahoo.com

Assistant Superintendent - Ron Morgan,  
ronalco844@gmail.com

Secretary - Dave Williams (440) 838-4996  
dave\_wms@sbcglobal.net

Treasurer - Greg Noeth (216) 789-2086  
gjnoeth@yahoo.com

Director East - Fred Obreza (216) 587-4419  
chevy5664@sbcglobal.net

Director Quad County - Jim Moore (419) 684-5833  
moorez@aol.com

Director West - Gary Schaefer, trains.ohio@yahoo.com

Director at Large - Brian Haas, haasland@msn.com

Director at Large - Jeff Lauren, jflrn@sbcglobal.net,  
21-798-1896

## APPOINTED POSITIONS

Great Berea Train Show - David James c (440)-785-9907  
david.j@brtcharter.com

Achievement - Bruce Brintnall MMR,  
brintnall@mindspring.com

Layout Tours - Ron Morgan, ronalco844@gmail.com

Contests - David Lawler, davelawler@oh.rr.com

Historian/Archivist - Frank Bongiovanni

Raffle - Adam Woodie, woo3482@hotmail.com

Co. Store Manager - Scott Benson,  
sbenson440@zoominternet.net

Clinics - Larry Madson, lmadson@roadrunner.com

Flatwheel Editor - Bruce Bowie, in2trains@gmail.com

Membership - George Keller, gkeller@woh.rr.com, (c)  
419-217-0396

Modules - Adam Woodie, woo3482@hotmail.com

N.O.A.R.S. Representative - Bill Kovacs

Webmaster - Ben Lanza, blqt@nls.net

Refreshments - Joe Filipiak, graftonpotter@frontier.com

Training Day - Gary Schaefer, trains.ohio@yahoo.com



# DIVISION 4

## THE NORTH COAST DIVISION

**OUR NEXT REGULAR MEETING WILL BE FRIDAY, APRIL 12, 2019.  
WE OFFER GOOD FELLOWSHIP, FREE SOFT-DRINKS/COFFEE AND  
AN INFORMATIVE CLINIC ON SOME ASPECT OF OUR HOBBY. JOIN US!**

### WHEN & WHERE WE MEET

The North Coast Division holds 10 meetings a year (none in July and August). Meetings are on the 2nd Friday of each month. A

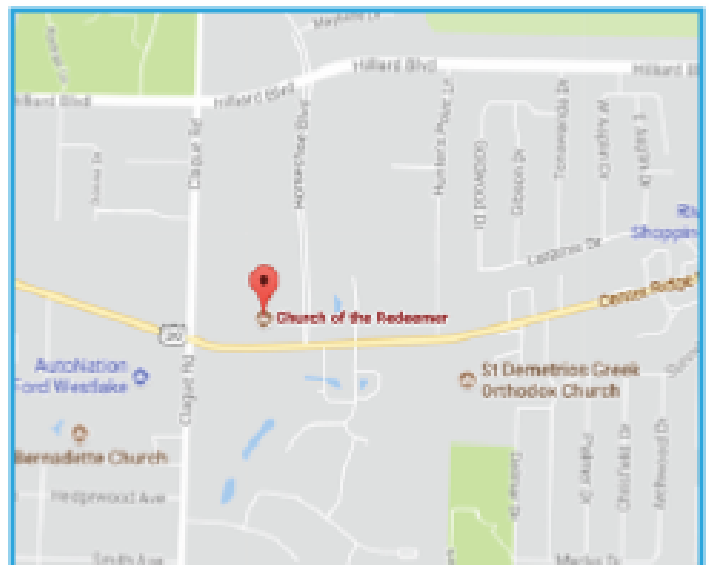
social half hour starts at 7:00 p.m. followed by a short business meeting at 7:30. After a short break, a railroad themed raffle and clinic complete the typical agenda. Meetings are held at the Church of the Redemer, 23500 Center Ridge Rd, Cleveland, OH 44145. Visitors are welcome to attend any meeting.

The Division's newsletter, *The Flatwheel* is published monthly (except during July and August) by Division 4 of the Mid-Central Region (MCR) of the National Model Railroad Association (NMRA). All comments are welcome. Views expressed in *The Flatwheel* do not necessarily reflect the opinion of the NMRA, MCR, or Division 4.

*The Flatwheel* is typically electronically published no later than the Monday preceding the monthly meeting. Submissions are due no later than the 26th of the prior month, for example, August 26th for the September *Flatwheel*.

Uncredited photos courtesy of the editor or staff photographer Dave Williams.

**Yahoo** - The Division has a Yahoo group available for members. Send your request to join to [dave\\_wms@sbcglobal.net](mailto:dave_wms@sbcglobal.net). It's best to include "Division 4" in the subject line and include your name. The group is private and does not appear on the Yahoo directory.





AN

## EDITORIAL

No matter your skill level within our hobby, all of us who actually make models, be they scratch built, kit bashed or kit, have a need to measure. Sometimes a lot! Now I am not sure where in our history HO scale was established, but c'mon, 1:87, really? Why not 1/8" to the foot, which is actually halfway between the established "S" and "O" scales. One divide by 87 is .011494. Try doing that in your head!!

So, what is a HO modeler such as myself to do. An oft used solution is a "scale" ruler. While they are good for

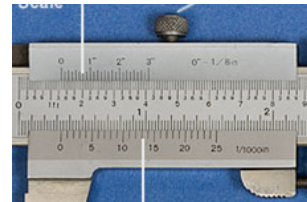
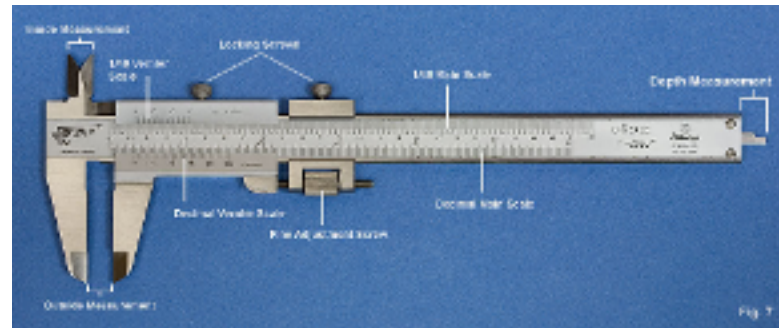


rough measurements, my old eyes just can't see an inch on such scales. The zoomed in image is approximately full size. So now, cut me a piece of strip wood 3'7" long. And good luck!

Pierre Vernier (19 August 1580 at Ornans, Franche-Comté, Spanish Habsburgs (now France) – 14 September 1637, same location) was a French mathematician and instrument inventor. He was inventor and eponym of the vernier scale used in measuring devices.

I believe it was in the 1970's that PFM introduced their

scale vernier calipers. While a great advance over the



scale ruler, it is still quite difficult to discern at my age which line is lining up with which line. PS - I own one of these if anyone wishes to purchase it?

A much easier to read solution is a dial caliper. Today they can be found on eBay for \$25 to \$100. Some years ago General made a plastic HO scale dial caliper, No. 1401. I own one and it is my go to tool for measuring scale strip wood and styrene. Is that a 2"x8" or a 2"x10". Easy, quick and accurate. Walthers still lists it at \$35.80.



However, it is out of stock and I believe no longer manufactured. If I wanted/needed one, I would have an eBay search saved to notify me if one comes up for sale. PS - mine is NOT for sale!

Today a good option is a digital caliper. My relatives at Micro-Mark have two. One reads millimeters or inches and the other millimeters or inches as fractions. Both are accurate to .005". There are many

smartphone and tablet scale conversion apps, so just get one and punch in the numbers to convert to your scale. Or, and I think faster, print a conversion chart and hang it above your work bench. I bought my current digital caliper from Amazon for \$17.85. Incredibly cheap for a great tool. The Neiko 1407A Electronic Digital Caliper measures all three modes; inch, mm and fractions accurate to .001" for that price. And unlike my first digital caliper that broke when I dropped it, this one even turns off automatically when left unattended, maximizing battery life. 🚂



**BRUCE BOWIE**  
**EDITOR**

# FROM THE SUPER

**“Driving the train doesn’t set its course. The real job is laying the track.”**

***Ed Catmull***

Going once, going twice, going three times. SOLD !!! Those words rung out multiple times during our biannual auction held during the last meeting. If you missed it, you missed a lot of fun. Frank Bongiovanni, Gary Sole and I were the auctioneers. Between the multiple bids and bits of dry humor most of us went home with a few things we weren’t expecting to buy. And a few went home with a lot more than I think they thought they would. I must send out a BIG THANK YOU to the crew that made it happen. Bruce Bowie, Dave Williams and Greg Noeth for keeping the tickets and financials straight. Our runners Tim Sheffield, Brian Haas and Ken Orchard. And my fellow auctioneers, Frank Bongiovanni and Gary Sole.

Have you registered for the Regional Convention (May 2nd-5th), “The Bullet 2019” yet? Division 1 is hard at work putting together a great schedule of op sessions, tours, clinics etc for your enjoyment. Here is the website: <https://www.div1-mcr-nmra.org/the-acy-bullet-2019> for your reference. There you can download a registration form to complete and mail in. And you can look over what the convention will offer in the way of clinics, tours etc. So “Don’t Dodge this Bullet”.

Do you read Model Railroader? Did you read the article on detailing telephone poles in the April issue? The article was written by one of our own Div 4 members Joe Kurilec. Joe is a prolific writer and authors many articles for the Flatwheel and other publications. So, if you didn’t read the article find a copy of the April issue of Model Railroader

and give it a look. And then give Joe a pat on the back for a job well done. Congratulations Joe !!!

Do you have a comment or suggestion for the Division ? If so, please make it a point to arrive at April’s meeting by 7 PM and attend the Director’s meeting in the sitting room by the church entrance. All our Directors (trustees) will be in attendance to listen to your input. The Directors will in turn present what they have heard at the general meeting that evening. So please attend and let your voices be heard.

October 12th has been selected for our trip to the Oil Creek and Titusville railroad in Titusville, Pennsylvania. Ron Morgan will present the details of the trip at the April meeting and will have a signup sheet available. Make sure you have the date circled on your calendar.

Please continue to welcome our new members and visitors to our meetings. Try to answer their questions the best you can or refer them to another member who might have the answer. Remember, we were all green at some point. See everyone on April 12th.

As always, Model Railroading is Fun !!! 🚂

**LEE SHEFFIELD,  
SUPERINTENDENT**



# GENERAL MEETING MINUTES

## NMRA MCR Division 4 General Meeting Minutes for Friday March 8, 2019

### Church of the Redeemer, Westlake Ohio

Superintendent Lee Sheffield started the meeting at 7:30 pm, stating that due to the expected length of the evening's auction, the formal portion of the meeting would need to be kept to a very short length.

Achievement Program Chair Bruce Brintnall MMR presented Tom McInerney with his AP Certificates for Electrical and Civil Engineering. Bruce said that Tom is well on his way to receiving his MMR certificate.



Hearing of no further urgent business, Lee adjourned the meeting at 7:35 pm. 🚂

**DAVE WILLIAMS**  
**SECRETARY**



**SPRING TOURS** - As previously announced there will be no Division 4 Spring open houses this year. However, the Cuyahoga Valley and Westshore Model Railroad Club will be having a Spring open on April 27th and 28th and on May 4th and 5th from 11:00 am until 4 pm both weekends. Come out and support the club and view several new areas on the HO layout. Remember the club really could use the financial support to help pay for the new roof (*See flyer in WHAT'S GOING ON - Editor*). - Ron Morgan, Layout Tours Chairman





# THIS & THAT

**ONE OF OUR OWN AUTHORS AN ARTICLE FOR *MODEL RAILROADER*** - North Coast Division member Joe Kurilec, MMR, and frequent *Flatwheel* author, wrote an article published in the April 2019 edition of *Model Railroader* magazine. Congratulations Joe!



*Joe Kurilec lives in Berea, Ohio, with his wife, Barb. He is a life member of the National Model Railroad Association.*

**DIY LOCOMOTIVE TEST STAND** - Follow this link, to a descriptive article on how Canadian Steve Lewis built his own locomotive test stand. Eventually I will likely make one myself. While my design might be somewhat different Steve provides some good information to get started. - *Editor*

**NORTHWEST SHORT LINE** - From NWSL's Facebook site dated March 17, 2019:

This is the post I don't want to make but the time has come. I just can't do this without Lynda. Following is the notice I sent to all the magazines.

=====

After 60 years in business, NWSL will cease operations effective August 30th, 2019. The company will continue to take orders for in-stock products until July 1st, 2019. Closure is for personal reasons and sale of the business is not anticipated, although reasonable proposals will be considered.

Lynda is the owner's wife and business partner for those wondering. I recently saw a group chat that implied a new owner had been found but I have been unable to verify that at this time. Hopefully I can pass on a confirmation shortly. - *Editor*

## How Seiichi Miyake's bumpy tiles impacted railway platforms and streets around the world

By Michelle Lou and Saeed Ahmed, CNN

Updated 1606 GMT (0006 HKT) March 18, 2019



**Tactile blocks invented by Seiichi Miyake help the visually impaired to navigate public spaces.**

(CNN) - Most people probably don't give a second thought to the yellow, bumpy tiles near the edge of subway platforms and urban crosswalks. But for the visually impaired, they can mean the difference between life and death.

The person who dreamed

# MODULE GROUP

The module group had two great events in March, Division 5's Railfest and a display at the Avon Lake Library on March 23 - 24. Attendance in Avon Lake has always been good, this year was no exception. We wrap up a busy winter/spring season with a display at the Medina Train Show on April 7. Then, we'll be looking forward to our first display at the Cuyahoga County Fair in August!



## FROM THE RECENT NOVI SHOW - PHOTOS by GARY SCHAEFER



**SCOTT BENSON**  
**MODULE GROUP**



up those tactile squares? Seiichi Miyake, whose invention is recognized today on Google's homepage.

Here's what you need to know about Miyake and how his invention ended up in public spaces around the world.

### What are the tactile blocks for?



**Miyake's tactile blocks are often found at the edge of railway platforms.**

The tactile blocks (originally called Tenji blocks) help visually impaired people navigate public spaces by letting them know when they are approaching danger. The blocks have bumps that can be felt with a walking cane or through shoes.

The colored tiles are often found at the edges of railway platforms or crosswalks.

The blocks have two main patterns: dots and bars. The dots signal danger, while the bars provide directional cues that indicate a pedestrian is on a safe path.



# MEMBERSHIP

## NEW MEMBER

Our Division 4 can be very proud of it's members who volunteered to promote the NMRA at Division 5 Railfest 2019. One new member was signed up under the NMRA Rail Pass introductory offer of 9 months and another promising young couple who might attend our next monthly meeting. Although we didn't garner many new members the experience of promoting the NMRA was rewarding in itself.

Until the next time ,

**GEORGE KELLER**

**MEMBERSHIP CHAIRMAN**



MEMBERS: If your membership information needs to be updated, or for any questions about membership, please email George Keller, Membership, at [gkeller4@woh.rr.com](mailto:gkeller4@woh.rr.com) or call 419-217-0396 and leave a message.

## How did Miyake come up with the idea?

Miyake, a Japanese inventor, invented the system of blocks after learning a friend's vision was becoming impaired. They were first introduced on a street near the Okayama School for the Blind in Okayama, Japan on March 18, 1967.

A decade later, the blocks spread to all Japanese railways. The rest of the planet soon followed suit.

Miyake died in 1982, but his invention lives on almost four decades later, making the world a little safer.

## RAFFLE

The theme of the April raffle will be "Time for Spring Cleaning!" There will be something for everyone at next month's raffle.

**ADAM WOODIE,**  
**THE RAFFLE DUDE**





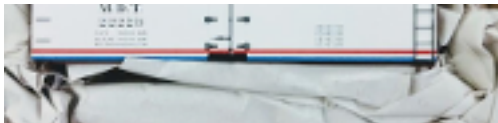
# COMPANY STORE

## New project for Division 4

### ***Davies Steel hopper cars are in!***



These are based on Dean Freytag's steel mill modeling. Dean's railroad was the South Ridge Lines and the steel mill was known as Davies Steel. We have designed a 70 ton three bay hopper car that in theory belonged to the South Ridge Lines and was leased to Davies Steel. There are four pre-lettered cars with application of pre-printed decals to expand a fleet of cars to 12 numbers. Price is ONLY \$20 each. The cars have arrived. We have sold about 45 Davies Hopper Cars. You may see them advertised in various places. There are 11 MDT Reefers remaining. Shirts, Hats, and Patches available.



**Wood Side, 2 numbers  
available \$18 ea.**

**Division 4 Patches  
\$3 ea.**



**MCR Schoolhouse  
Laser Cut Kit \$45 ea.**



***SHIRTS and HATS ARE NOW AVAILABLE  
THROUGH THE CO. STORE!***

***Polo's along with both short and long sleeve.***

## **FREE DVD'S!**

I should remind everyone that we have a library of how to DVD's for member use. A \$10.00 deposit for each DVD rented. \$10.00 returned when DVD returned at next meeting. Check the listing by clicking on MEMBERS ONLY, then VIDEO LIBRARY to see a list of over 120 DVD's!

**SCOTT BENSON  
CO. STORE MANAGER**



# CLINIC

## APRIL 2019

### **Jim Moore on JMRI's Decoder Pro**

What can Decoder Pro do for you? Jim will guide you through what you need to know to program your engines using the software program. BTW, Decoder Pro is a free program.

## MAY 2019

### **The Biggest Events in U.S. Railroad History Since 1850 Gary Sole.**

This clinic will cover railroad history starting with the development of Chicago as a rail hub in 1850, to the current railroad landscape of 2019. Along the way, the timeline will cover the four Transcontinental railroads, the financial panic of 1893 (that totally changed the railroad maps of America), development of US Steel, the USRA Joint line, Great Depression, Mergers and many more current events. Along the way are a number of modeling ideas.

## **CLINICS WANTED**

**Help!!!!** I am looking for programs for January through June 2019. If any of you would like to share your modeling techniques, know of someone I could contact for a program, or have a suggestion for a program topic, please contact me. If you have contacted me previously about a program, please take time to remind me again.

**Larry Madson**

**lmadson@roadrunner.com**

**440-934-2643 or 440-864-2305**

**Clinic Presentation Aids** Division 4 has a digital projector available for use by Division members for presenting clinic programs in digital format. We now also have a carousel slide projector with carousels. The Division also has a video camera available for program enhancement. Anyone wishing to use the camera or the projectors for their program, contact Larry.

**LARRY MADSON**

**CLINIC CHAIRMAN**



# CONTEST TABLE

**There was NO MARCH contest as we held the Biennial Auction**

**REMINDER TO FEBRUARY WINNERS, PLEASE BRING AND SHARE YOUR MODELING TIPS AT THE APRIL MEETING**

**The April contest is for HEAVY DUTY OFF LINE CONSTRUCTION EQUIPMENT, rollers, graders, dozers, back hoes, steam/power shovels etc.**

Once again, in a effort to reduce confusion, I've included some pictures of heavy duty construction equipment. The diesel crawler is a semi-scratch, kit-bash from the Cheerios Shop and the grader is a Rio Grande Models kit.



**Don't forget the May contest is for A SMALL TOWN BANK and these can be be judged for Achievement Program points. Bring your AP forms if you want to be judged.**



**DAVE "MR.  
CHEERIOS" LAWLER  
CONTEST CHAIRMAN**

FYI - Per the National and Regional contest rules,:

*"The diorama had to be a maximum of two square feet and had to be constructed on a wood or foam base"*

This should be noted by any of you diorama builders who might wish to enter a contest at a higher level than ours here at the North Coast Division.



# BIENNIAL (EVERY OTHER YEAR) AUCTION WRAP UP



BY GREG NOETH

## The March 2019 meeting (Bi-annual) Auction Results.

We had 50 members sign-in as buyers &/or sellers.

14 Members sold items.

31 Members were buyers.

Total money changing hands was \$1,646.00 with a Division 4 donation of \$164.00 and 4-H of \$15.00. *(The Division once again opted to not charge the standard 10% fee. A member generously donated the funds generated by the sale of his items to the Division. Coincidentally, the funds raised was exactly 10% of the total sold. - Editor)*

The next auction will be March 2021! The seasoned team of auctioneers, Lee Sheffield, Frank Bongiovanni and Gary Sole and their team of runners did a great job of maximizing the prices on the sellers' behalf while their commentary continued to inspire and amuse all.

## THANKS TO ALL THAT BOUGHT AND SOLD AND ESPECIALLY TO OUR AUCTION TEAM!

Items sold ran the full gamut from very old and well used to brand new, including track, rolling stock, motive power and structures. There were in addition a number of railroadians items.

The Division again this year waived the usual 10% fee, allowing sellers to receive the full amount bid. Treasurer Greg Noeth led the financial end of the auction assisted by Dave Williams and Bruce Bowie.

The evening event and cleanup finished at 10:15 PM.

Sales totaled **\$1,646.00**



# HOW DID THE NICKLE PLATE GET ICE?

BY SPAIN JAMES

The drawings on the next page are excerpts from the Sanborn Insurance Company's fire insurance maps. From the 1860s to the middle of the twentieth century, Sanborn Insurance Co. mapped the denser parts of thousands of towns in detail. There are two major on-line sources for access to them.

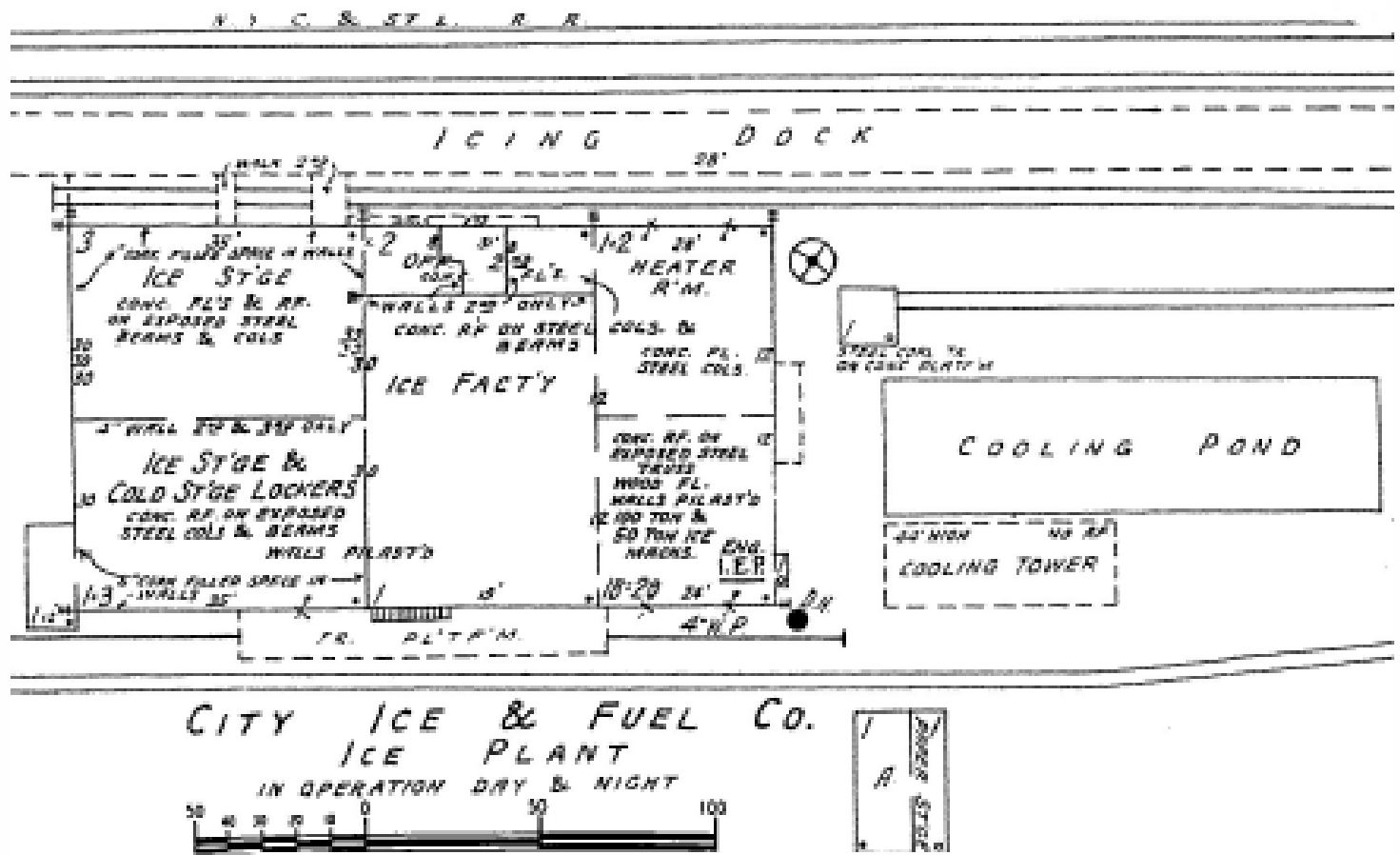
Library of Congress

<https://www.loc.gov/collections/sanborn-maps>

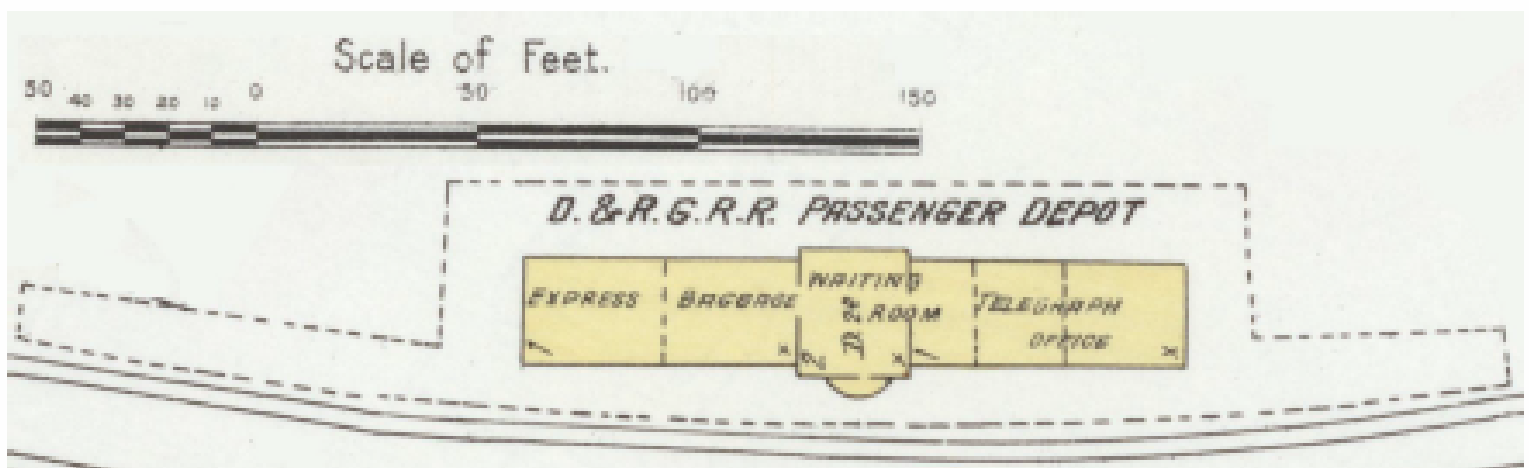
Ohio Web Library <https://oh0051.oplin.org:2154/>

The former covers the whole country, and is in color, which shows building construction, as well as having a thorough explanation of the maps.

The Ohio Web Library is limited to black and white scans, but covers even villages like Grafton and Wellington. Did the CH&D have a transfer table in Lima? (Yes) What industries did the Big Four serve in Wellington? Start from the cheese warehouses and work your way out. 🚂



Well, here's how they did it in Bellevue in 1949.



Or, if you're a slim rail guy, and want to know how big the Denver and Rio Grande depot in Durango was, you could try this.



# DIGITRAX UP-5 TRACK STATUS LED

I purchased my first DCC system in 1996. My system of choice was, and continues to be, manufactured by Digitrax. I still LOVE my Digitrax system. And having used other systems, I would still choose Digitrax over many other good systems. The reasons are mine and do not necessarily make sense to other system owner's. That's OK.

This is not to say Digitrax makes the best system (although I think they do) nor their designs are perfect. A case for the negative is the ubiquitous UP5 Loconet Universal Interconnect Panel. These panels are typically distributed around the fascia providing a location to plug in a throttle using one of the two front jacks. While the newer duplex throttles no longer require being plugged in to connect to the system, many (myself included) still utilize simplex throttles necessitating the use of these jacks.



The only other function of the panel to operators is the small LED located in the very center of the panel labeled TRACK STATUS. This LED will light when track feeders are connected to two terminal screws on the back corners of the unit AND the track power is turned on.

This is a very handy feature, particularly on layouts with multiple operators. These layouts tend to have multiple power sub-districts fed through electronic circuit breakers. A too frequent problem occurs when an engineer enters a turnout with the points against him/her, a short occurs and the electronic circuit breaker interrupts power to the section it protects.

We don't always know why our engines stop moving. Mechanical issues? Dirty track? A short circuit? Etc. If you feed track power to the UP-5 LED you have an easily recognized indicator that power is on/off to a given power district. That is the good news.



**BY BRUCE BOWIE**  
**PHOTOS BY THE AUTHOR**

The track power travels on the Digitrax UP-5 circuit board from the terminals on the back through two small diodes to the LED. The bad news, and in my honest opinion, a Digitrax design flaw, is the diodes are underrated. Over time they tend to fail. When they fail they generate a short circuit that in turn trips the electronic circuit breaker.

OK, you have a power district on your layout that has a short. What is causing it? We typically look at engines followed by rolling stock. Did an engine enter a turnout against the points? Did a piece of rolling stock derail? Did one of those pesky metal grab irons fall off your museum quality model in just the wrong spot to cause a short? Anyone that has built or is responsible for the maintenance of even a small layout will know the degree of difficulty in finding a less than obvious short. And who in their right mind would think of those pesky little diodes on that circuit board buried behind your fascia?

A good friend asked Jim Moore and I to travel to Michigan to help an elderly (well, older than Jim and I anyway) friend troubleshoot his layout. He had had a short in a large section of his DCC layout for two years and had never been able to find it. After a great breakfast at a Clyde, OH "~~greasy spoon~~" local diner, we made the trek north.

The layout was quite large, maybe 25' x 25'. It was an older layout that had DCC added to a portion of it. The shorted section was good size by square footage but fairly basic in its track configuration. Of course, there were no drawings and peeking under the skirt, the wires were not the most neatly laid out. Jim and I started our search by identifying the ends of the power district. We then removed all motive power and rolling stock. Still shorted. Hmmm. We then looked closely at all the track trying to spot an errant screw or other metal object that might be the source of our unwanted electrical path. Still nothing. Hmmm.

Being the younger technician (sorry Jimmy, but it is true), I got down on my knees and started tracing the bus wires under the layout. I hadn't gone far when I saw a pair of feeders leading off to where? I followed them to the rear terminals of a UP-5.

That is when the antique Edison light bulb in my head went off! I actually recalled something I had read a long time ago about the diode failure issue and

subsequent short circuit they caused. I excitedly yelled up to Jim (I think he was napping, so I loudly yelled) to pull the UP-5 off the fascia and remove the two track feeders. Bingo! The short cleared and our friend's friend was delighted to once again be able to run trains on his layout.



So now I am building my latest layout, the East Broad Top v3.2. I have installed my DCC system including three power districts subdivided into nine power sub-districts. The sub-districts are protected by PSX electronic circuit breakers by DCC Specialties. I really want to use the UP-5 LED to indicate track power status. But when my trains won't move I DON'T want to be dependent on my aging brain cells to recall in the years ahead the potential source of a short.

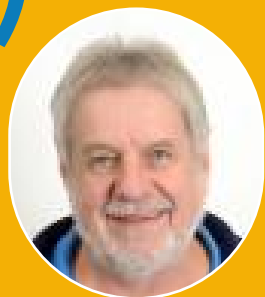
I noticed the PSX has some auxiliary outputs available. One set of outputs can provide remote LED status. Ah ha. I did a test running two wires from the PSX to the rear track connections on the UP-5. The UP-5 LED lit up with track power on and went off when I tripped the PSX by shorting the track. With the track power restored, I then shorted the two wires running between the UP-5 and the PSX, simulating a UP-5 diode failure. The LED went off, but DID NOT trip the PSX breaker. So I now had the solution I wanted.

I also have a couple spots I would like the LED track status but I do not plan to install a UP-5. I determined the PSX's auxiliary output can drive more than one LED. At least three in my case. So I have answered another layout design question.

As a side note, and to support those who identify me as anal, I decided to change the UP-5's LED. The original is a bicolor LED with a "funky" color. I unsoldered the original and replaced it with a green LED. After all, GREEN means GO and if my engines are GOING you should see a GREEN LED, shouldn't you?? Duh. 🤪

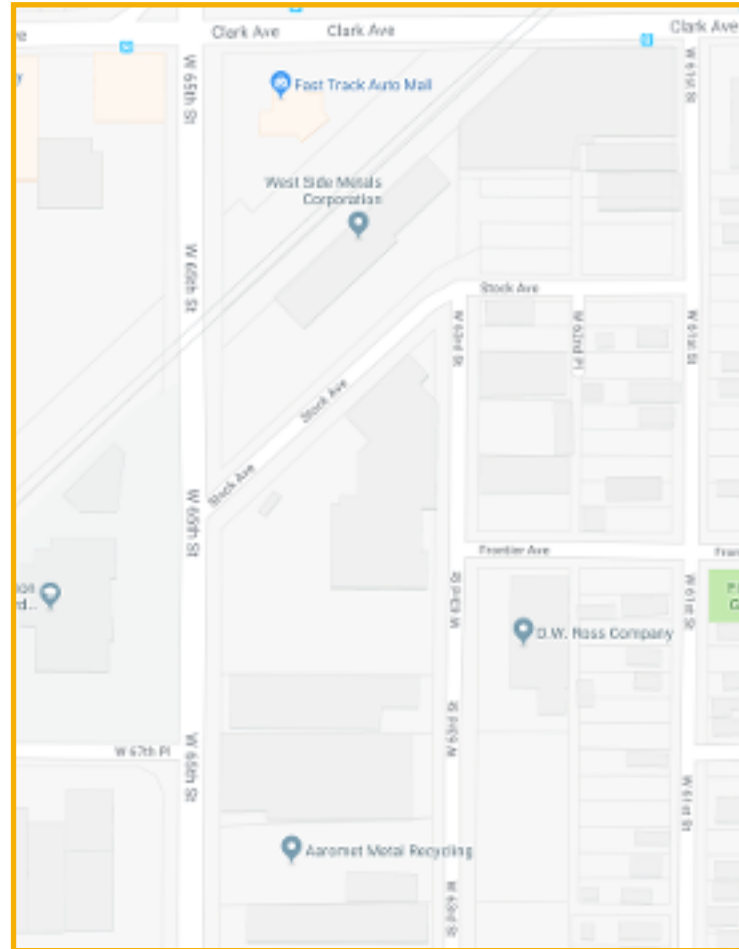


# DRIVING AROUND THE OLD CLEVELAND STOCKYARD AREA (WEST 65TH)

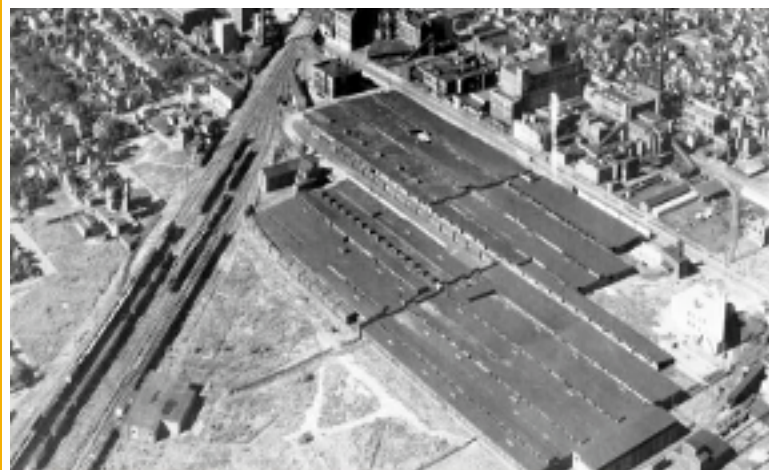


by JOE KURILEC, MMR

I can remember the old stockyards in the early 1950s and all of the "interesting" smells. Years later I used to drive by the stockyard area on my way to work.



The old Swift & Company building on west 65th was torn down in 2018. Above is a map showing the streets around the old stockyard area where these 2016 images were taken.



This aerial view shows the complete stockyard complex in the 1920s. K-Mart had a store located here. West 65th runs center right to top left.

Almost at top center, the square building at the end of the stockyard complex was once a hotel named "Hotel de la Hoof".



The Swift & Company building is the large building at the top right. There are still rails in the "tree lawn" that parallel West 65th.



The view above taken off of the internet shows the many holding pens in the 35 acre stockyard complex. The stockyards were organized in 1881. In 1893 it purchased the Farmers & Drovers' Stockyard Company which was located on Scranton Road.

A landslide destroyed that location, moving the stockyards to 3200 West 65th.



In 1944 there was a large fire that destroyed the holding pens.

The photo at the top of the next column is of a building that was on Dennison and Storer Ave. It was used to show livestock that was for sale to the meat packing plants.

That building became Rollercoade. A well know roller skating rink. It was also the site of a Fazio's food store in the late 1960s.



Taken from West 65th. street looking west toward Store Ave. The stockyards closed in 1968. Three years later the Chicago stockyards closed.





Around March 2018 demolition started on the building.



Getting back to my drive around this area, I found the back of one of the many building still standing. Notice the dark brown stone details!



In the same general area I found this group of 6 stacks. Not very prototypical!



Across the street I found an old lonely tank car in an empty field. I would think it was used to hold by products for the stockyard. 🚚



# SCENERY WE HADN'T THOUGHT OF



BY JOHN HEMSATH,  
MMR

*Member John Hemsath came across this online article and sent the link to a few lucky members. I thought it was unique and fitting so I have used it as an article. Hey new Contest Chairman, maybe a subject for a monthly contest? - Editor*

## Miniature Figures Top Coin Purses, Makeup Compacts, and Teapots in Lush Narrative Scenes by Kendal Murray

FROM: [thisiscollosal.com](http://thisiscollosal.com)

MARCH 13, 2019

KATE SIERZPUTOWSKI



**"Family Style, Smile" (2012), mixed media assemblage, 11 x 13 x 10 cm**

Kendal Murray works in miniature, crafting



assemblages that present familial scenes built into and on top of common items found in the home such as glass tea pots or coin purses. The objects are often covered in fake grass, and present wholesome scenarios—such as a family posing on their car in front of fall foliage, or a man taking a jog through a pasture (while being followed closely by a heard of fluffy sheep). The Sydney, Australia-based artist is currently lecturing in Design at the School of Humanities and Communication Arts at Western Sydney University, and is represented by Arthouse Gallery in New South Wales, Australia. You can see more of her playful sculptures on her website. 🚗



**"Bird's Eye View, Blue Sky Debut" (2012), mixed media assemblage, 18 x 13 x 13 cm**



**"Promised Land, On Hand" (2012), mixed media assemblage, 10 x 8 x 10 cm**



**"Breakfast Time, Just in Time" (2012), mixed media assemblage, 11 x 13 x 13 cm**



**"Exceed Speed, Mislead, Concede" (2012),  
mixed media assemblage, 18 x 24 x 14 cm**



**"Fun Run, Dry Run" (2012), mixed media  
assemblage, 5.5 x 10 x 10 cm**



**"Fun Run, Dry Run" (2012), mixed media  
assemblage, 5.5 x 10 x 10 cm**



**"Earthward, Skyward, Homeward" (2012),  
mixed media assemblage, 21 x 26 x 16 cm**



# WHAT'S GOING ON?

**Cuyahoga Valley & West Shore Railroad Depot**  
**2019 SPRING OPEN HOUSE**



Saturday, April 27th • 11 a.m. to 4 p.m.  
 Sunday, April 28th • 11 a.m. to 4 p.m.  
 Saturday, May 4th • 11 a.m. to 4 p.m.  
 Sunday, May 5th • 11 a.m. to 4 p.m.

**Admission \$3.00 Donation • Kids FREE**

- Visit our 140-year Old Historic Depot
- Tour our Real Caboose!
- Raffle Prizes
- Operating HO, O & N Scale Models



**Cuyahoga Valley & West Shore**  
 MODEL RAILROAD CLUB  
 Olmsted Falls Depot • 25802 Garfield Ave.  
 OLMTSTED FALLS, OHIO 44138  
 TEL: (440) 235-6566  
[www.cvwsrrc.org](http://www.cvwsrrc.org)

**How to Find Us**



**TCA**  
**LAKE ERIE CHAPTER**  
 TRAIN COLLECTORS  
 ASSOCIATION  
**SPRINGTIME  
 TRAIN MEET**

**Saturday, March 30, 2019**

U.A.W. Hall, 5615 Chevrolet Blvd., Cleveland, Ohio

- Free Parking
- Ground-Level Entrance
- Good Lighting
- Wide Isles
- Refreshments Available
- New and Old Trains
- Parts, Repair Manuals, Price Guides, Books, Etc.
- Train Videos
- Model Building Supplies and Kits
- Lionel, American Flyer, MTH, Williams, LGB, and Many Other Brands
- O, S, HO, N, Z & Large Scale



**NEXT LAKE ERIE CHAPTER MEET: NOVEMBER 30, 2019**

**ADMISSION: Adults \$6 • Children under 18 Free with Adult**  
 Open to the Public: 10AM - 3PM

For More Information Contact: [tcakeerie@gmail.com](mailto:tcakeerie@gmail.com)

## IRON AND STEEL

**ALL GAUGE MODEL TRAIN SHOW AND EXPO**

*TRAIN SETS, LOCOMOTIVES, ACCESSORIES, EQUIPMENT,  
 MEMORABILIA AND MUCH MORE!*



**SUNDAY, MARCH 31, 2019**

**9:00 am - 3:00 pm**

**St. Lucy Palermo Banquet Center**  
**394 Tenney Avenue, Campbell, Ohio 44405**

**Admission only \$5 per person, 12 and under free**  
**Free Parking - Handicapped Accessible**  
**Delicious Snack Bar**

### TABLE RESERVATIONS

Name: \_\_\_\_\_  
 Address: \_\_\_\_\_  
 Phone: \_\_\_\_\_ Email: \_\_\_\_\_  
 Number of tables @ \$25 each: \_\_\_\_\_ Total \$: \_\_\_\_\_ Deadline is March 15, 2019  
 Make checks payable to: Dennis Mariano  
 1532 Tamarisk Trail, Poland, Ohio 44514  
 330-923-5518 • Email: [consultdennis@hotmail.com](mailto:consultdennis@hotmail.com)



2019

# MEDINA MODEL RAILROAD & TOY SHOWS

SUNDAY - FEBRUARY 3<sup>rd</sup>SUNDAY - APRIL 7<sup>th</sup>SUNDAY - OCTOBER 27<sup>th</sup>CHRISTMAS **X**TRAVAGANZASUNDAY DECEMBER 1<sup>st</sup>

-- NEW HOURS 9 AM TO 3 PM --

MEDINA COUNTY COMMUNITY CENTER  
(Medina Fairgrounds)  
Medina, Ohio



MEMORABILIA



FOR ADDITIONAL INFORMATION  
WRITE, CALL or VISIT OUR WEBSITE

## ADDRESS

Conrad & Dowell Productions, Inc.  
9047 Kennard Rd., Lodi, OH 44254  
800/748-4430 Day of Show 330.722.8585  
[www.conradanddowell.com](http://www.conradanddowell.com)

## TARIFFS

\$36 Day Show - \$25 if prepaid by Wednesday before show

## SET-UP

Night Before Show 4 p.m. to 8 p.m.  
Day of Show - 7 a.m. to 9 a.m. -- New Hours

Door Prizes - Food & Drink

## ADMISSION

Adults \$5.00 - Children under 12 FREE



The Youngstown Model Railroad Association Presents:

## THE MODEL RAILROAD & TOY TRAIN FLEA MARKET

CELEBRATING  
OUR  
62<sup>ND</sup> YEAR



## 2019 SHOWS

Sunday, January 13th, 2019

Sunday, April 14th, 2019

One of Ohio's premier Model Railroad Flea Markets & Toy Train Shows featuring all gauges of model railroad equipment, memorabilia and railroad related items.

## IT'S BIGGER AND BETTER THAN EVER!!!

Over 230 dealer tables, excellent lighting, unlimited paved parking.  
FREE shuttle service, restrooms, & Snack Bar available.

## GREAT LOCATION:

SALEM CENTER PLEX

1098 N. Ellsworth Ave.

Salem, Ohio 44460

HOURS: 10:00 A.M. - 3:30 P.M.

ADMISSION: \$5.00 PER PERSON

TABLES (8 FOOT) \$25.00 EACH

For Reservations call:

Jim Pope: 330-547-3614 or Darrell Balakoff: 330-718-1057

WEBSITE: [WWW.YMRA.ORG](http://WWW.YMRA.ORG)



**Date:** Saturday April 20, 2019  
**Location:** Painesville Railroad Museum  
 475 Railroad St., Painesville, Ohio 44077  
**Time:** 8:00 am – 12:00 noon  
**Cost:** \$7.00/Adults \$5.00 Sr. Citizen \$3.00/Children (12 and under)  
 \$15 family of 4 = 2 Adults 2 Children (10 and under)

**Easter Egg Hunt 10:00 am**



**Proceeds Benefit:**  
 Restoration of Painesville Depot  
 and  
 Diabetic Children



Lake County Juvenile Diabetic Walk Family  
 www.lcjdwalk.org  
 A 501(c)(3) Non-profit  
 440-478-0481

Painesville Railroad Museum  
 www.painesvillerailroadmuseum.org  
 A 501(c)(3) Non-profit  
 219-470-5780

**Montpelier Tractside Modelers RR Club's**

# Model Railroad Show & Swap

**Sunday, April 28, 2019**

**10:00 a.m. — 3:00 p.m.**

**Quality Inn**

13508 State Rt. 15, Exit 13 on the Ohio Turnpike, 419-485-5555

**Holiday City, Ohio**

**Open house at the club layout in Montpelier 12-4 p.m.**  
**308 West Main St.**

100 Vendor Tables  
 Operating Layouts • Free Parking  
 Food & Drink • Door Prizes  
 Wynn's Brunch 10 a.m. — 2 p.m.  
 Handicap Accessible



Find us on Facebook at  
 Montpelier Tractside  
 Modelers RR Club

**Admission: Adults \$5.00**  
 Children 12 and under **FREE** with adult  
 Scouts in uniform **FREE**

Show Information Contact  
 Tables-Jim McPike 419-298-2441  
 jmcpike@gmail.com  
 General Information-  
 Chuck White 260-760-1666  
 railcarman@frontier.com



# MODEL TRAIN DAYS

at

## THE PAINESVILLE RAILROAD MUSEUM

475 Railroad Street, Painesville, Ohio 44077

For info call Len at 440-417-6746

# MAY 4-5 2019

10 am to 5 pm

See operating Model Train Layouts in N scale,  
HO scale, S scale, O gauge and G gauge.  
12 Different Layouts to see!  
Model Train Free market on grounds.



Admission: \$6.00 adult, \$3.00 child (5 to 12 year old)  
\$12.00 Family (two 2 adults, 3 children)



### Directions to Painesville Depot

I-90 (exit 200) to Rt. 44  
North on Rt. 44 to Rt. 2  
East on Rt. 2 (1.5 miles) to OH 520 / OH 200 (exit  
200)  
South on OH 200 for 200 feet, left turn (east onto  
Chesler St.)  
East on Chesler St (0.7 miles) to North State Street  
South on North State Street (under RR Bridge) to  
Railroad Street  
East on Railroad Street to Depot.

### Food and Drinks available.

Proceeds to help the restoration and preservation of  
the historic NYC Painesville Depot and bring her back to  
its glory days of the NYC.

[www.painesvillerailroadmuseum.org](http://www.painesvillerailroadmuseum.org)

©2019 Len Paine

# Spree Model Train Show

OPEN TO THE PUBLIC

- **SATURDAY ONLY** -

**MAY 18, 2019**

**9:30 AM TO 3:00 PM**

All Gauge Train Show



## CROWN PLAZA HOTEL

7230 Engle Road, Middleburg Heights, OH 44130  
(440) - 243 - 4040

Saturday only Admission: \$6.00, Kids under twelve Free



Spree Chairman: Jim Futules 330-633-9097  
Registration: Ken Vendinger 440-833-4366

Sponsored by Cuyahoga Valley S Gauge Association ([www.cvsqa.com](http://www.cvsqa.com))



# HOBBY SOURCES IN OUR AREA

**State Tool & Die** 

4780 Briar Road | Cleveland, OH 44135 | T: 216-267-6030



Shop our entire inventory of HO scale cars and accessories at [www.statetoolanddie.com](http://www.statetoolanddie.com)

**Sounds Of Motion** 

DCC SALES AND TECHNICAL SUPPORT

6910 SOM Center Rd.  
Solon, OH 44139  
Phone 440-248-4599

FRANK FEKO  
Proprietor  
[frankfeko@gmail.com](mailto:frankfeko@gmail.com)

**DEPOT TRAIN & HOBBY**  
"It's not just a Hobby . . . It's an Adventure."

Garden Railroad, Lionel, HO, & N  
Trains, Track, and Accessories  
Plastic Models, Rockets,  
Wooden Ships, Hobby Tools, and Paint

4342 W. 130th Street  
Cleveland, Ohio 44135  
216-252-8880  
[www.depotland.com](http://www.depotland.com)



**EASTERN OHIO TRAINS**  
*The Hobby Home of High Speed Service*

2740 Fairmount Blvd.  
Cleveland Heights, Ohio 44106  
Phone: 216-215-7377  
Fax: 216-371-0931  
email: [cohss@aol.com](mailto:cohss@aol.com)  
[www.easternohiotrains.com](http://www.easternohiotrains.com)

Joe Andrews, Proprietor

JASON'S BRASS POLES

We specialize in trolley model products.  
Railroad Trolley & Specialty & Model Railroad Dealer

Brian Weisman - Owner

[bweisman@roadrunner.com](mailto:bweisman@roadrunner.com) (TROLLEYS & MODEL RAILROAD DEALER)

<http://www.jasonsbrasspoles.com/>

***These vendors are members of our very own NORTH COAST DIVISION! Give them a try when you need the supplies and services they offer!! - Editor***

# AL'S TRAINS & HOBBY LLC

708 BROADWAY AVE.  
BEDFORD, OHIO 44146



DCC INSTALL  
FRAME MILLING  
TRAIN SETS & ACCESSORIES  
MODEL KITS-SLOT CAR SETS  
& ACCESSORIES

HOURS:  
M-W-F: 10-6  
THURS: 10-7  
SAT: 10-4  
SUN-MON: CLOSED

Phone: 440-232-0591 Fax: 440-232-0596

www.alstrains hobby.com email: al@alstrains hobby.com

(216) 661-7300  
FAX (216) 661-6433



## TRADING POST TRAIN SHOP

FEATURING LIONEL TRAINS

JAMES J. BERILLA  
Owner

4394 PEARL RD.  
CLEVELAND, OHIO 44109

# DEPOT TRAIN & HOBBY

"It's not just a Hobby . . . It's an Adventure."

Garden Railroad, Lionel, HO, & N  
Trains, Track, and Accessories  
Plastic Models, Rockets,  
Wooden Ships, Hobby Tools, and Paint

4342 W. 130th Street  
Cleveland, Ohio 44135  
216-252-8880  
www.depotland.com



KEEP YOUR TARGET "ACQUIRED"  
AT THE

## WARZONE MATRIX

CHRIS WILSON  
(216) 433-1316  
WARZONEMATRIX.COM



4704 ROCKY RIVER DRIVE  
CLEVELAND OHIO 44135

M2ONE@sbcglobal.net

MON - SAT. 10-5  
SUN. NOON-5

www.ormandys.com



I - HO - Z GAUGES AND PARTS

Ormandy's

TRAINS & TOYS FOR THE CONNOISSEUR  
SPECIALIZING IN EUROPEAN TRAINS  
BUY & SELL OLD TOYS

JOHN ORMANDY

330-722-1019  
330-722-2205 Fax



10 PUBLIC SQUARE  
MEDINA, OHIO 44256

EXTENDED  
HOLIDAY  
HOURS

# Model Trains

Jan Dell Flowers Train Shop

Lionel - MTH - Marklin - Micro-Trains - Kato - LGB - Piko - Bway Ltd.

19350 Detroit Road Rocky River OH 44116

440/331-2392  
Jim Lewis



# Uncle Ray's Trains

4282 Lake Rd. • Sheffield Lake, Ohio 44054



uncleraystrains@gmail.com

Or call Uncle Ray at... (888) 933-2999 • (440) 933-0609

www.uncleraystrainsoh.com

## Stewart's Hobbies & Collectors' Toys

Trains • Plastic Kits • Die-Cast Cars  
Slot Cars • Toy Soldiers

38033 Euclid Ave. • Willoughby, OH 44094

440/942-6632

STORE  
HOURS:  
M-F 12-6  
THURS. 12-8  
SAT. 10-6

ROB STEWART  
SANDY STEWART

• Buy •  
Sell • Trade  
Old & New

# Strongsville Hobby

of Elyria

440-366-0665



ELECTRIC & NITRO R/C CARS, BOATS, AIRPLANES, SLOT CARS, ROCKETS  
HOBBY SUPPLIES & PINE CAR DERBY, TRAINS & PLASTIC MODELS

831 Chestnut Commons Dr.  
Elyria, Ohio 44035  
Phone (440)366-0665  
Fax (440)366-0666

R/C TRACK  
ON SITE

[www.strongsvillehobby.com](http://www.strongsvillehobby.com)

Mon - Fri 11:00 - 8:00  
Sat 11:00 - 6:00  
Sun 12:00 - 5:00  
JERRY IVANCIC

# DANIELS HOBBIES

Premium Quality

Est 1978

34E Main Street, Norwalk, OH 44857  
M-Sat 10AM-6PM, Closed Sundays  
(419)588-2029 | [danielshobbies.com](http://danielshobbies.com)

## CORNER FIELD



### MODEL RAILROAD & HOBBY

18720 Pioneer Road • Middlefield, Ohio 44062

Located in Hunsburg

**Tom Elesh, Owner • 440-636-5162**

Website: [cornerfieldmodelrailroadmuseumandhobby.com](http://cornerfieldmodelrailroadmuseumandhobby.com)

Email: [cornerfield@cornerfieldmodelrailroadmuseumandhobby.com](mailto:cornerfield@cornerfieldmodelrailroadmuseumandhobby.com)

## BAD L's Hobby

Your One Stop Slot Car Shop!

13397 Smith Road  
Middleburg Heights, OH 44130



440-941-BADL (2235)  
[info@badlhby.com](mailto:info@badlhby.com)  
<http://badlhby.com>

**Bob Lusch**  
The "B" in BAD

## STOCKYARD EXPRESS LLC

O-Gauge MTH Electric Trains & Accessories

*Where the bull stays in the barn and the train rolls down the track*

• MTH Authorized Service & Demo Center •

**MTH - Lionel - Atlas**

'O' Trains, track, accessories and more

49293 Plate Rd  
Oberlin, OH 44074  
(South of Boardman & SR 20)

Clyde & Diane Lewis

440.774.2131 / 440.774.7575 fax

[www.stockyardexpressllc.com](http://www.stockyardexpressllc.com)

[email:stockyardexpress@aol.com](mailto:email:stockyardexpress@aol.com)

## Stauffer Books & Prints



[www.staufferbooksandprints.weebly.com](http://www.staufferbooksandprints.weebly.com)

**STAUFER BOOKS & PRINTS**

(330) 636-1672



## HOBBYTOWN USA

7982 PLAZA BLVD.  
MENTOR, OH 44060

HTUMENTOR@AOL.COM  
440-974-2116 MON-SAT 10am-8pm



**BEN FRANKLIN**



Plastic, Wood & Metal Models  
Trains • Rockets • Kites • Coin Books  
Die Cast • Roadrace • Pine Car Derby  
Puzzles • Radio Control • Dime Store

Large Selection  
Great Prices  
Howard Mowcomber

183 Park Ave.  
Amherst, OH 44001  
440-988-5462

tanm55@centurytel.net

## THE MUSIC BOX

Grand Pacific Junction  
8062 Columbia Road  
Olmsted Falls, OH 44138

440-235-1625

themusicbox@prodigy.net

# PLEASE SUPPORT THESE DEALERS!

# DIVISION 4, MCR, NMRA

## *The North Coast Division*

The North Coast Division holds 10 meetings a year (none in July and August). Meetings are on the 2nd Friday of each month. A social half hour starts at 7:00 p.m. followed by a short business meeting at 7:30. After a short break, a railroad themed raffle and clinic complete the typical agenda. Meetings are held at The Church of The Redeemer, 23500 Center Ridge Road, Westlake, OH 44145. Visitors are welcome to attend any meeting.

The Division's newsletter, *The Flatwheel* is published monthly (except during July and August) by Division Four of the Mid-Central Region (MCR) of the National Model Railroad Association

(NMRA). All comments are welcome. Views expressed in *The Flatwheel* do not necessarily reflect the opinion of the NMRA, MCR, or Division Four.

Uncredited photos courtesy of the editor or staff photographer Dave Williams.

*The Flatwheel* is typically electronically published no later than the Monday preceding the monthly meeting. Submissions are due no later than the 26th of the prior month, for example, August 26th for the September *Flatwheel*. 🚂

## **Lackawanna EMD F-3 (He thinks!) - Dave Lawler**



## **ABOUT US**

We are Division 4 of the Mid-Central Region of the National Model Railroaders Association. With more than 200 members from Cuyahoga, Erie, Huron, Lorain and Medina counties in the state of Ohio. The North Coast Division meetings are normally held on the second Friday of the month to hear guest speakers, share skills, have railroad related clinics, and to share common problems and successes. Many of us get together informally in round-robin sessions to operate and work on each other's layouts, or just to talk railroads and modeling.